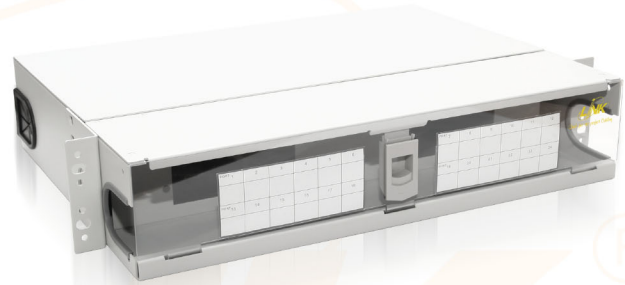


DESCRIPTION / APPLICATION

- LINK Fiber Optic Distribution Unit (FDU) rack mount fixed type design with innovation technology very easily install and very flexible to use by removable back cover and removable front door with label. Supply with screw, cage nut and label. Complies with standard ANSI/TIA-568.3-D ISO/IEC 11801:2017 and RoHS Compliant.

FEATURES / MATERIAL

- Designed for all fiber optic wiring.
- Suitable for installation in 19" rack.
- Structures made from high grade Aluminum, lightweight and very durability.
- Provide removable back door easy to install and maintain.
- Provide removable front door clear polycarbonate with label easy to identify port and connector.
- Uses with all type of LINK fiber optic adapter snap plate.
- Provide Full Moon Cable Routing (internal management ring) to control internal wiring for direct connecting and changing to Splice Tray (SV-2256) for fusion splicing.]
- UF-2014A support 6-48 fiber ports, UF-2016A support 6-96 fiber ports.
- Accessories provided in bagged.
 - 4 sets of screw with M6 cage nut and PVC cup washer
 - 4 cable ties
 - 2 label



RACK MOUNT FIXED

Part Number	Description	No. of Adapter Plate	Color	Dimension W X D X H (Cm)
UF-2014A	4 SNAP- IN, F.O RACK MOUNT, FIXED TYPE	4	Light Grey	48.2 x 33.6 x 8.9
UF-2016A	8 SNAP- IN, F.O RACK MOUNT, FIXED TYPE	8	Light Grey	48.2 x 33.6 x 13.2

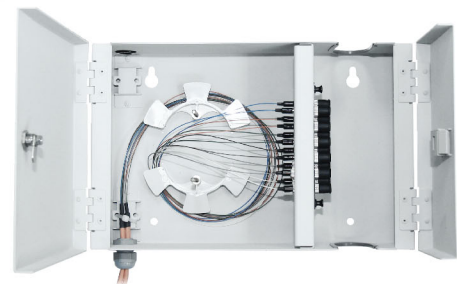
FIBER OPTIC WALL MOUNT TYPE

DESCRIPTION / APPLICATION

- LINK Fiber Optic Distribution Unit (FDU) wall mount type design with innovation technology very easily install and very flexible to use by wall mount type with security lock. Supply with cable gland, key, screw, nylon anchor and label. Complies with standard ANSI/TIA-568.3-D ISO/IEC 11801:2017 and RoHS Compliant

FEATURES / MATERIAL

- Designed for all fiber optic wiring.
- Suitable for installation on wall.
- Structures made from Electro galvanize sheet steel, very durability.
- Top and Bottom cable entry integral grommets for preventing dust from entering the system.
- Uses with all type of LINK fiber optic adapter snap plate.
- Provide Full Moon Cable Routing (internal management ring) to control internal wiring for direct connecting and changing to Splice Tray (SV-2256) for fusion splicing.
- Dual doors with separate locking options for quick to install or manage and security.
- Lockable front door provides added security and prevent unwanted access.
- UF-2022A support 6-24 fiber ports, UF-2024A support 6-48 fiber ports.
- Accessories provided in bagged.
 - 2 cable glands, - 2 key, - 4 sets of screw and nylon anchor
 - 4 cable ties for UF-2022A, 8 cable ties for 2024A and 1 label



WALL MOUNT ENCLOSURE

Part Number	Description	No. of Adapter Plate	Color	Dimension W X D X H (Cm)
UF-2022A	2 SNAP- IN, F.O WALL MOUNT TYPE	2	Light Grey	33.0 x 9.2 x 21.4
UF-2024A	4 SNAP- IN, F.O WALL MOUNT TYPE	4	Light Grey	33.1 x 9.2 x 31.6