

# Category 5e RJ45 Modular Jacks

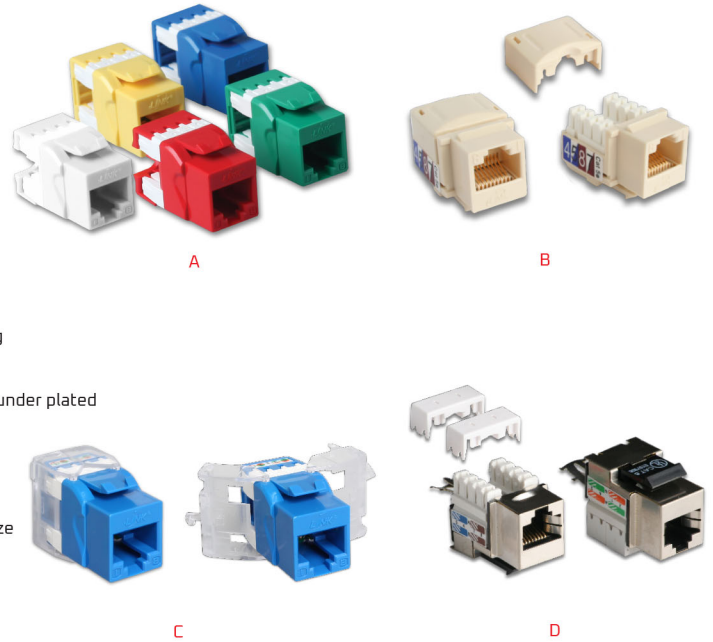


LINK Category 5e (CAT 5E) RJ45 Jacks are performance exceed ANSI/TIA-568.2-D Category 5e requirements and UL approve file No. E196947. The Jacks accept 26-22 AWG solid conductor and combine two wiring of T568A/B (Universal color pattern) for easy installation. The Unshield Jacks 110 IDC terminal block is design for 110 impact tool which can be protect of dust by cover cap for long life warranty.

## SPECIFICATION



Standard	: ANSI/TIA-568.2-D Category 5e, ISO/IEC 11801:2017 Class D and EN-50173-1
Application	: 10/100/100 BASE-T, 2.5G BASE-T, IEEE 802.3i/u/ab/bz, PoE/PoE+, 4/16 Token Ring, 52/155/622Mbps and 1.2Gbps ATM, ISDN, VoIP and other
Product Type	: RJ45 Jack with cover caps
Wiring Pattern	: T568B/T568A Universal Color Pattern
Housing Material	: High Impact Flame Retardant Plastic
Housing Flammability Rating	: UL94V-0 ABS
Jack Contact	: Phosphor Bronze with over 50 micro-inches gold plating
Termination Block	: 90° & 180° 110 IDC , UL94V-0 Polycarbonate
IDC Contact	: Phosphor Bronze with tin over 150 micro-inches nickel under plated
Durability	: 800 mating cycles (Jack Contact) 200 re-termination cycles (IDC contact)
Tool Free (Toolless Type)	: 180° IDC, UL94V-0 ABS
Shield Cover (Shield Type)	: 50-60 micro-inches Nickels Plating over Phosphor Bronze
Accept Wire Size	: 26AWG - 22AWG Solid & Stranded Wire
Approvals	: UL Listed E196947 and Intertek Channels Test
Certified	: Lead-free & RoHS Compliant



Part No.	Description	Type	Figure	Color
US-1005SCX	CAT 5E RJ45 COLORFUL JACK, SLIM TYPE	Unshielded	A	X
US-1005	CAT 5E RJ45 MODULAR JACK, ORIGINAL	Unshielded	B	Ivory
US-1005STF	CAT 5E RJ45 BLUE JACK, SLIM TOOL FREE	Tool Free	C	Blue
US-1013	CAT 5E RJ45 MODULAR JACK	Shielded	D	White/Metallic

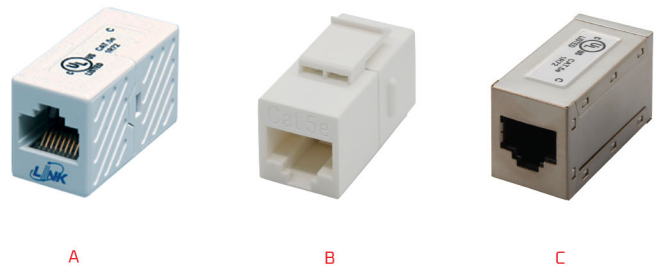
X Color = 1 (White), 2 (Red), 3 (Green), 4 (Blue), 5 (Yellow)

## Category 5e In-Line Couplers

LINK In-Line Couplers provide a 180 Jack to Jack Splice. Couplers are available in eight position RJ45 Styles and comply with Category 5e (CAT 5E) ANSI/TIA-568.2-D Performance requirements with UL Listed. LINK In-Line Couplers are universal standards for all RJ45 Modular Plug.

## SPECIFICATION

Standard	: ANSI/TIA-568.2-D Category 5e, ISO/IEC 11801:2017 Class D and EN50173-1
Application	: 10/100/100 BASE-T, 2.5G BASE-T, IEEE 802.3i/u/ab/bz, PoE/PoE+, 4/16 Token Ring, 52/155/622Mbps and 1.2Gbps ATM, ISDN, VoIP and other
Product Type	: RJ45 JACK to RJ45 JACK
Color	: White / Metallic with LINK logo
Certified	: Lead - free & RoHS Compliant



Part No.	Description	Type	Figure	Dimension	Color
US-4005	CAT 5E IN-LINE COUPLERS	Unshielded	A	L35 x W16 x H21 mm.	White
US-4005IL	CAT 5E IN-LINE COUPLERS, for PATCH PANEL	Unshielded	B	L30 x W14.5 x H16.5 mm.	White
US-4005S	SHIELD CAT 5E IN-LINE COUPLERS	Shielded	C	L36 x W18 x H22 mm.	Metallic